



## **Capability Statement 2019**

Copyright © 2019 Pilewest this document and its contents remains the property of Pilewest and may not be reproduced or distributed without approval.



Pilewest is a Perth based business unit of Roam Pty Ltd specialising in the design, supply and installation of steel screw piles, driven piles, sheet piles, soldier piles and anchors as well as auger drilling and down the hole hammer drilling for rock services. We also offer Pile testing.

Our goal is to deliver a quality piling solution for your next project that will exceed your expectations. From intelligent design all the way through to fast, efficient and safe installation we will deliver piling on time and on budget.

We have been in business since July 2010 and seek to mirror our continued business growth with the personal growth and development of our client relationships.

We promise to:

- Use best practice techniques, procedures and applications to efficiently provide the highest quality piling products and services for the all market segments.
- Provide you with the highest level of quality piling products and services at fair and competitive prices.
- Ensure the longevity of our company through repeat and referral business achieved by customer satisfaction in all areas including timeliness, attention to detail and service.
- Maintain the highest levels of professionalism, integrity, honesty and fairness in our relationships with our suppliers, subcontractors, professional associates and clients.
- Cooperatively work within the guidelines of our Health, Safety, Environmental and Quality policies and those of our clients.
- Supply, source and manufacture products utilising Australian businesses and local content where possible and practical.

We will provide:

- Loyalty, personal development and equal opportunities to our most important asset – our people.
- Personal attention to detail and quality performance that creates value for our clients.
- Proven experienced industry professionals that understand and meets your project's requirements.
- Commitment to a safe work environment.
- Ethical and sustainable business practices.

We are committed to providing the highest possible level of professional services for all our clients as well as a safe and enjoyable workplace for all our staff.

**Yours Sincerely**

**Graeme Heasman**

**Pilewest Manager**



With the successful completion of a diverse range of large projects across Western Australia, Pilewest has quickly established itself as a leading supplier and installer of various piling and retaining wall solutions.

Pilewest brings together the following:

- Experienced personnel with a wealth of specialised local knowledge in various pile design, installation, ground conditions and operating in remote locations.
- A network of professionals that can supply full engineering design, documentation, independent testing, certification and geotechnical investigation as required.
- Temporary shoring / retaining techniques, including soldier piling and sheet piling both with the options of being cantilevered, anchored or propped depending on the required retained height and site conditions.
- A range of specialised installation equipment, machinery and trained accredited operators.
- Pilewest is committed to delivering the right foundation or temporary shoring solutions.



***Sheet Pile Installation: Retaining System, 370 Victoria Rd, Malaga***



Screw piles also known as helical piles have been used in construction for over 200 years with early versions being used for lighthouse structure foundations. Developments in materials and installation equipment in the last 15 years have seen screw piles become a versatile and efficient alternative to conventional piling techniques.

**Steel screw piles can offer the following benefits over traditional piling methods:**

- Fast installation
- No curing time is required, work can continue immediately after installation.
- Unaffected by high ground water which can cause auger holes to collapse.
- No spoil is generated; this is of significant benefit for contaminated sites.
- Low environmental impact, minimal noise and vibration during installation.
- Can be removed, reused and are made from 100% recyclable steel.
- Ground conditions can be proven by monitoring the torque achieved during installation.
- Screw piles can be easily extended should ground conditions change or differ from that expected.
- Corrosion rates can be accurately determined and included in the screw piles design.







Our strategic partner has been manufacturing steel screw piles in Australia since 1992.

Our supplier has a 1500m<sup>3</sup> manufacturing facility. From this facility Pilewest can supply large volumes of screw piles with strict quality control right across Australia to tight schedules at competitive prices.

A special purpose built helix shaping press allows true helical plates to be formed with no flat spots which are typical problem with helix plates pulled apart in normal presses.

Typically over 70 tonnes of manufactured screw piles can be produced consistently during a normal working shift.





Soldier piling is a retaining wall solution that is effective in ground conditions which range from stiff clay to rock where it is not practical to drive lightweight sheet piling. Soldier Piles can be used as either temporary shoring or permanent walls and may also be designed to carry building loads.

- **Quick installation and excavation**
- **Can be cantilevered or anchored**
- **Suitable for using near structures and services**
- **Low environmental impact, minimal noise and vibration during installation.**
- **Good solutions for retaining where limestone is present.**

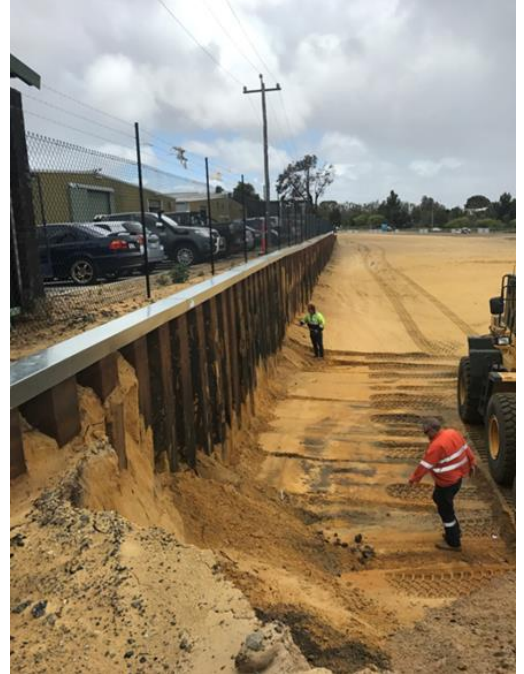






Sheet piling is a form of driven piling using thin interlocking sheets of steel to obtain a continuous barrier in the ground. The main application of sheet piles is in retaining walls and cofferdams erected to enable permanent works to proceed.

- **Economic retaining solution.**
- **Quick installation and excavation.**
- **Can be cantilevered or anchored.**
- **Restricts water flow.**





Mechanical Anchors can be installed to increase the retained height on sheet pile or soldier pile retaining walls. Once installed anchors are completed, anchors can be directly load tested using hydraulic jacks. The speeds of installation of the anchors exceed that of traditional grouted anchors. Once tensioned after installation, excavation to a lower depth can begin immediately. Anchors can be removed or de-tensioned at a later time.

- **Economical.**
- **Can be used immediately after stressing.**
- **No curing time required after installation.**
- **Low environmental impact, minimal noise and vibration during installation.**







Pilewest is well equipped to test, design, supply and install the optimum piling solutions for solar installations throughout Australia.

We have in house registered Engineers, latest custom made solar piling rigs and a team of installation staff required in the installation of large solar projects.

In 2015 Pilewest completed the testing, design, supply and pile installation of driven piles for a 10.6MW solar installation at Sandfire Degruessa Solar Power Project in Western Australia.





### Sandfire Degruessa Solar Power Project 10.6MW

Location - DeGrussa, Western Australia

Client - OTOC

Date - December 2015

Value - \$1.25 M



Pilewest designed, supplied, installed and tested over 4700 driven piles for tracker solar panel frames.

### Curtin Detention Centre Expansion Screw pile Installation

Location - Derby, Western Australia

Client - Department of Immigration

Date - September 2010

Value - \$750k



Pilewest designed, supplied and installed over 2500 tie down screwpiles for the accommodation units for the Curtin Detention Centre expansion Stage 2. Installation of over 100 screwpiles consistently per day was achieved allowing up to 10 transportable modular housing units to be tied down each day.



### Macedon Gas Project Construction Village and ECPM offices

Location - Onslow, Western Australia

Client - BHP Billiton

ECPM - Technip

Date - August 2011

Value - \$1.2M



Pilewest designed, supplied, installed and tested screw piles foundations for the new 350 man new construction camp for the Macedon Gas Project, including, kitchen refuge and associated service buildings

Pilewest undertook additional geotechnical investigation across the site to determine the existing ground conditions to enable an optimum screw pile design.

Design of a new bolted adjustable top fixing bracket enabled fast and easy installation.





### Eastlink Office Park – Stage 2

Location - Belmont, Perth, Western Australia

Client – Jaxon Construction

Date - November 2011

Value - \$250k



Pilewest was engaged to design pilecaps and raft foundations for this new modern office building.

The proximity of the site to the Swan River and the high ground water level combined to present highly variable geotechnical conditions which presented unique construction challenges.

Monitoring of installation torques allowed screw piles to be founded accurately into the correct load bearing soil strata. Welded extensions were used to allow screw piles to be installed to depths of up to 22 metres quickly and efficiently.





### Dongara – Site Facilities

Location - Dongara, Western Australia

Client – Enerflex Process Pty Ltd

Date - February 2012

Value - \$250k



Working closely with Enerflex Pilewest was able to install over 550 piles in 4 days allowing a 140 man camp to be commissioned and operational within 3 months. Screwpiles were the preferred foundation solution to allow the project to be installed to such a tight timeframe with the additional benefit that they can be easily removed at the end of the project life.





### Onslow– Site Facilities

Location - Onslow, Western Australia

Client – Chevron

ECPM – Bechtel

Builder – Decmil Australia Limited

Date - May 2012 – Nov 2012

Value - \$1.8M

Pilewest is currently in the final stages of completing the screw piling work for the Wheatstone Fly Camp. When completed the camp will accommodate over 1000 persons with a full range of central facilities such as kitchen / dining, gymnasium, wet mess, left luggage, medical and operations buildings.

Over 3000 piles will be installed and tested as part of the project which is on schedule and with no incidents or lost time to date.

Pilewest has provided Decmil with a complete foundation package for this project. From the design, documentation phase through to the installation and testing and certification.







### Onslow – Site Facilities

Location - Onslow, Western Australia

Client - Chevron

ECPM – Bechtel

Builder – John Holland Pty Ltd

Date - Aug 2012 – Dec 2013

Value - \$3.4M



Pilewest has been awarded the screw piling contract for the Main construction Village and Utilities. Once completed the main camp will house over 4800 persons required for the construction of the plant for and infrastructure required for the Chevron Wheatstone LNG project which is one of the state's largest projects.





***Pilewest is proudly Australian owned and working our strategic partners we are committed to providing the right foundation solution for your next project.***

Contact :	Graeme Heasman
Telephone :	(08) 92484950
Facsimile :	(618) 92484950
Mobile :	0409 424 483
Email :	Graeme@pilewest.com.au
Web:	<a href="http://www.pilewest.com.au">www.pilewest.com.au</a>

